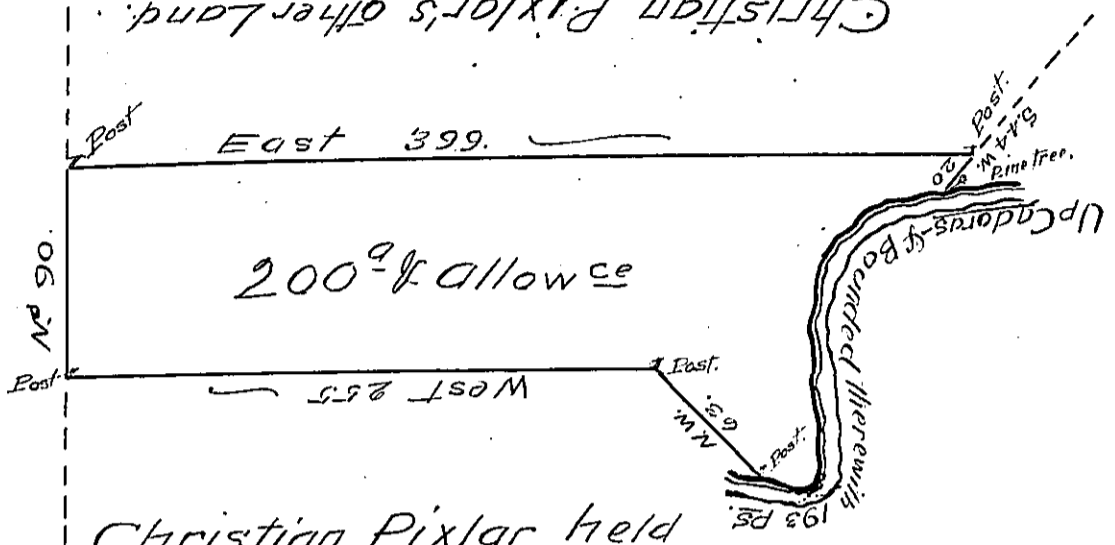


A-88-148

Christian Pixlar's other Land.

John Levestain.



Christian Pixlar held by Maryland Patent.

Survey'd to Christian Pixlar on the 1<sup>st</sup> of June 1763 the above discribed tract of Two Hundred acres and the usual allowce of 6  $\frac{1}{2}$  Ct. situate in Manchester Township York County - By Warrant of the Thirtieth of October 1736 ~

J. Bartrem Galbraith  
D.S.

To Jn<sup>o</sup>. Lukens Esq<sup>r</sup> }  
Survey<sup>or</sup> Gen<sup>l</sup> }

IN TESTIMONY that the above is a copy of the original remaining on file in the Department of Internal Affairs of Pennsylvania, made conformably to an Act of Assembly approved the 16th day of February, 1833, I have hereunto set my Hand and caused the Seal of said Department to be affixed at Harrisburg, this fifteenth day of March 1906.

*James R. Brown*  
Secretary of Internal Affairs.